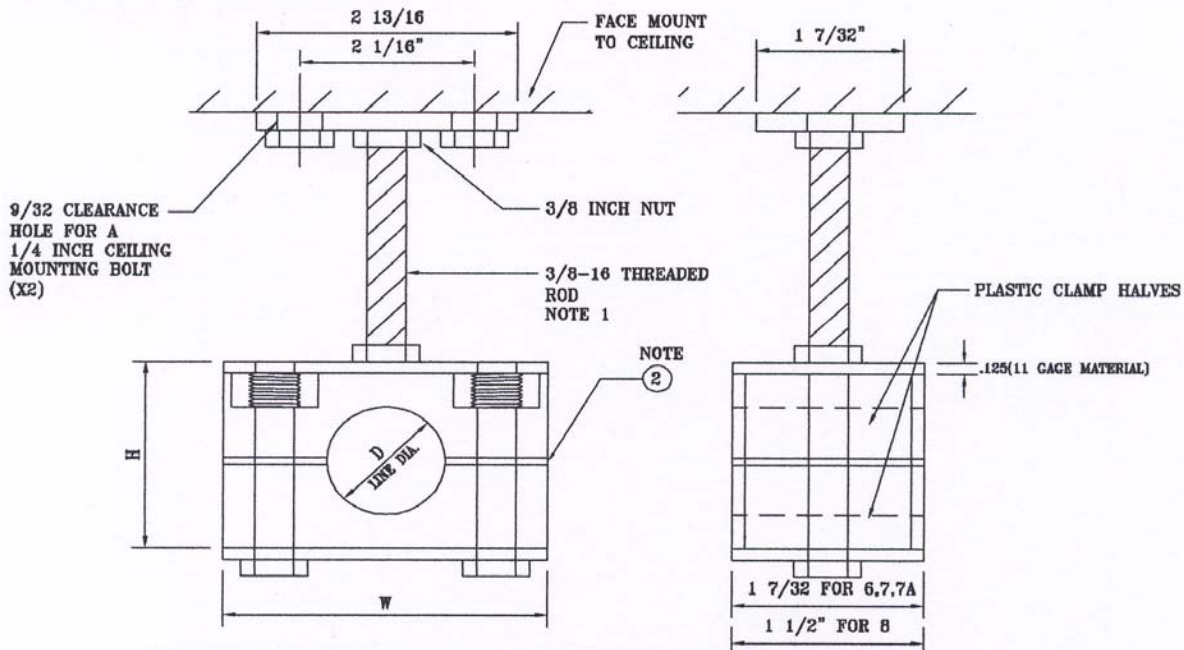


ProCOMP PARTS CATALOG – YOUR SOURCE
Telephone (888)388-4321 Fax (732)786-9511
www.ProCOMP-INC.com

CEILING MOUNTING PLATE WITH THREADED ROD

FABRICATION/INSTALLATION NOTES:

1. THREADED ROD MOUNT FOR HANGING SUPPORT USING CEILING MOUNTING PLATE
2. USE THERMAL EXPANSION GUIDE (IF NECESSARY) ϕ 0.03 INCH
3. THREADED ROD TO BE FIELD CUT



GROUP No.	"D" LINE DIA.	BEHRINGER PART No.	H	W
6	1/4"	SB-*--6025-**-COP-HAP-CMP	2.63	3.34
	3/8"	SB-*--60375-**-COP-HAP-CMP		
	1/2"	SB-*--6050-**-COP-HAP-CMP		
	3/4"	SB-*--6075-**-COP-HAP-CMP		
	1"	SB-*--6100-**-COP-HAP-CMP		
	1 1/4"	SB-*--6125-**-COP-HAP-CMP		
	1 1/2"	SB-*--6150-**-COP-HAP-CMP		
	2"	SB-*--6200-**-COP-HAP-CMP		
7	2 1/2"	SB-*--7250-**-COP-HAP-CMP	4.38	5.00
	3"	SB-*--7300-**-COP-HAP-CMP		
	3 1/2"	SB-*--7350-**-COP-HAP-CMP		
7A	4"	SB-*--7A400-**-COP-HAP-CMP	4.80	5.77
8	6"	SB-*--8600-**-COP-HAP-CMP	7.65	8.88

** - "PP" = POLYPROPYLENE
 ** - "SP" = SANTOPRENE
 * - SPECIFY HARDWARE
 "T" = 304 STAINLESS STEEL
 "X" = 316 STAINLESS STEEL
 "Z" = ZINC PLATED

NOTE: THESE PART NUMBERS DO NOT INCLUDE 3/8" DIAMETR THREADED ROD AND 1/4" INCH DIAMETR CEILING MOUNTINGS BOLTS

600 Park Ave., Manalapan, NJ 07726