

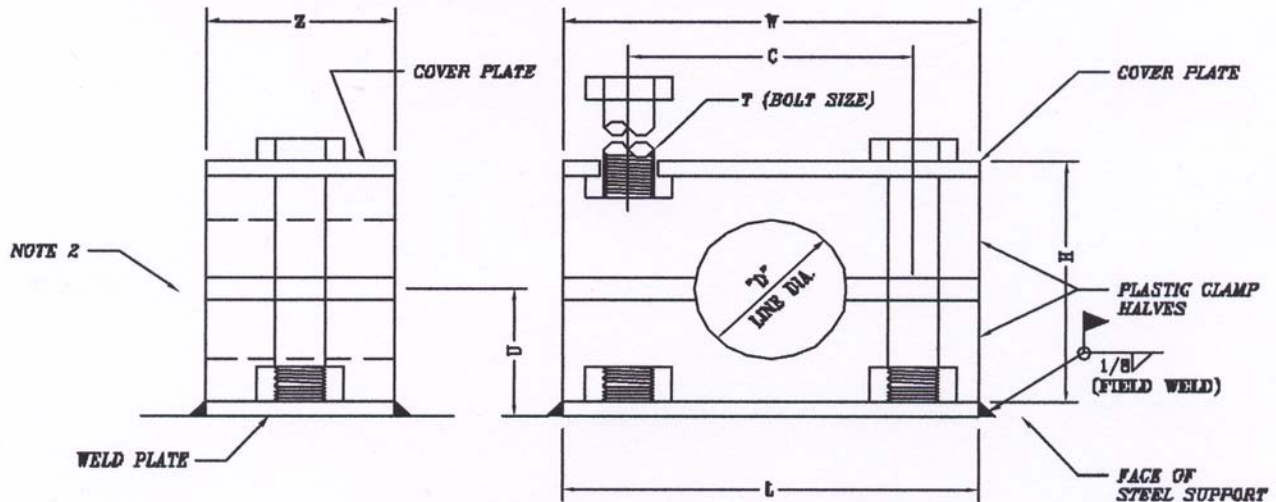
ProCOMP PARTS CATALOG – YOUR SOURCE
Telephone (888)388-4321 Fax (732)786-9511
www.ProCOMP-INC.com

HYGENIC TUBE SUPPORTS AND ANCHORS:

INSTALLATION NOTES:

1. WELD PLATE CAN BE FIELD WELDED TO STEEL SUPPORT OR BRAM IN ANY "VERTICAL" OR "HORIZONTAL" POSITION.
2. USE THERMAL EXPANSION GUIDE (SBG) SHIM WHEN NECESSARY TO ALLOW FOR THERMAL EXPANSION AND CONTRACTION OF LINE TUBE FOR LARGE TEMPERATURE FLUXES. FOR CORRECT MATERIAL CLASSIFICATION SUBSTITUTE PREFIX "SBG" IN LEU OF SB. (.030 BLACK SANTOPRENE)

NOTE: .030 MUST BE ADDED TO H DIMENSION WHEN USED.



GROUP No.	LINE DIA.	PART No.	"D"	W	H	C	L	U	Z	T BOLT SIZE
6	1/4 T	SB- ⁺ -6026- ^{**}	.350	3.34	2.63	2.60	3.37	1.44	1.19	1/4-20
	3/8 T	SB- ⁺ -60376- ^{**}	.375							
	1/2 T	SB- ⁺ -6050- ^{**}	.500							
	5/8 T	SB- ⁺ -60625- ^{**}	.625							
	3/4 T	SB- ⁺ -6076- ^{**}	.750							
	7/8 T	SB- ⁺ -60876- ^{**}	.875							
	1 T	SB- ⁺ -6100- ^{**}	1.000							
	1 1/4 T	SB- ⁺ -6125- ^{**}	1.250							
	1 1/2 T	SB- ⁺ -6150- ^{**}	1.500							
7	2 T	SB- ⁺ -6200- ^{**}	2.000	5.00	4.88	4.25	5.03	2.31	1.19	1/4-20
	2 1/2 T	SB- ⁺ -7250- ^{**}	2.500							
	3 T	SB- ⁺ -7300- ^{**}	3.000							
	3 1/2 T	SB- ⁺ -7360- ^{**}	3.600							
7A	4 T	SB- ⁺ -7400- ^{**}	4.000	5.77	4.80	4.95	5.77	2.64	1.19	1/4-20
8	8 T	SB- ⁺ -8600- ^{NN}	6.000	8.88	7.85	7.75	9.50	4.01	1.50	8/8-16

(NOMINAL PIPE SIZES AVAILABLE)

SPECIFY MATERIAL

- ^{**}- "PP" = POLYPROPYLENE (BLUE)
- "SP" = SANTOPRENE (RED)
- "NN" = UHMW (OFF-WHITE)

SPECIFY HARDWARE

- "T" = 304 SS
- "X" = 316 SS
- "Z" = ZINC PLATED

600 Park Ave., Manalapan, NJ 07726

- 20 -

NO ORDER IS TOO LARGE OR TOO SMALL