

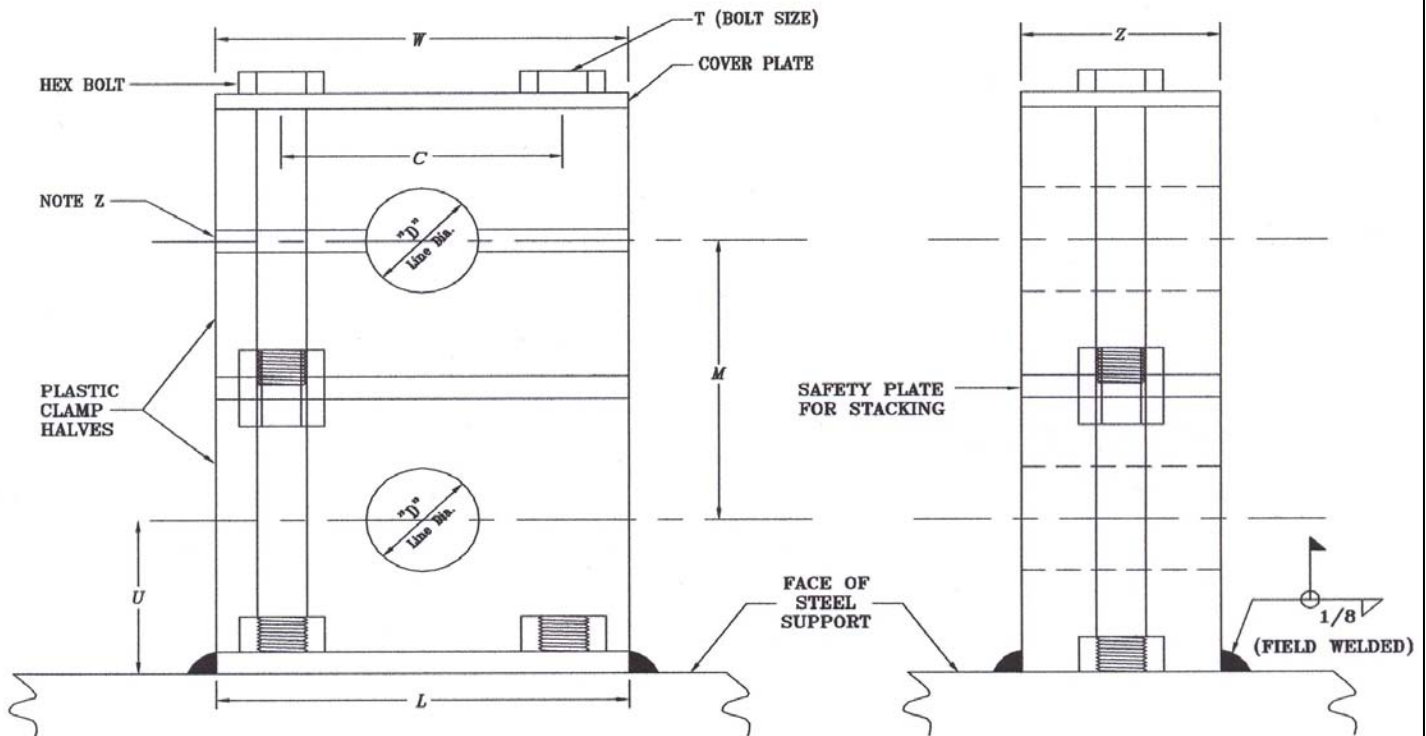
ProCOMP PARTS CATALOG – YOUR SOURCE
Telephone (888)388-4321 Fax (732)786-9511
www.ProCOMP-INC.com

**MODULAR MULTIPLE STACKING
OF HYGIENIC TUBE SUPPORTS**

(ANY COMBINATION 1/4" T THROUGH 2" T LINE DIAMETER)
(FOR USE WITH ANY MOUNTING CONFIGURATION)

INSTALLATION NOTES:

1. BOTTOM WELD PLATE CAN BE FIELD WELDED TO STEEL SUPPORT OR BEAM IN ANY VERTICAL AND HORIZONTAL POSITION.
2. USE THERMAL EXPANSION GUIDE (SBG) SHIM WHEN NECESSARY TO ALLOW FOR THERMAL EXPANSION AND CONTRACTION OF LINE TUBE FOR LARGE TEMPERATURE FLUXES. FOR CORRECT MATERIAL CLASSIFICATION SUBSTITUTE PREFIX "SBG" IN LEU OF SB. (030 BLACK SANTOPRENE).



GROUP No.	LINE DIA.	STACKING KIT PART No.'s	"D" LINE DIA.	W	C	L	U	Z	T BOLT SIZE	M
6	1/4 T	SB-*6025/OTHER LINE DIA.-**	.250	3.34	2.60	3.37	1.44	1.19	1/4-20 THREAD	2 1/8
	3/8 T	SB-*60375	.375							
	1/2 T	SB-*6050	.500							
	5/8 T	SB-*60625	.625							
	3/4 T	SB-*6075	.750							
	7/8 T	SB-*60875	.875							
	1 T	SB-*6100	1.000							
	1 1/4 T	SB-*6125	1.250							
	1 1/2 T	SB-*6150	1.500							
	2 T	SB-*6200	2.000							

(NOMINAL PIPE SIZES AVAILABLE)

*- SPECIFY HARDWARE
"T" = 304 SS
"X" = 316 SS
"Z" = ZINC PLATED

SPECIFY MATERIAL

**- "PP" = POLYPROYLENE (BLUE)
"SP" = SANTOPRENE (BEIGE)

600 Park Ave., Manalapan, NJ 07726

- 16 -

NO ORDER IS TOO LARGE OR TOO SMALL