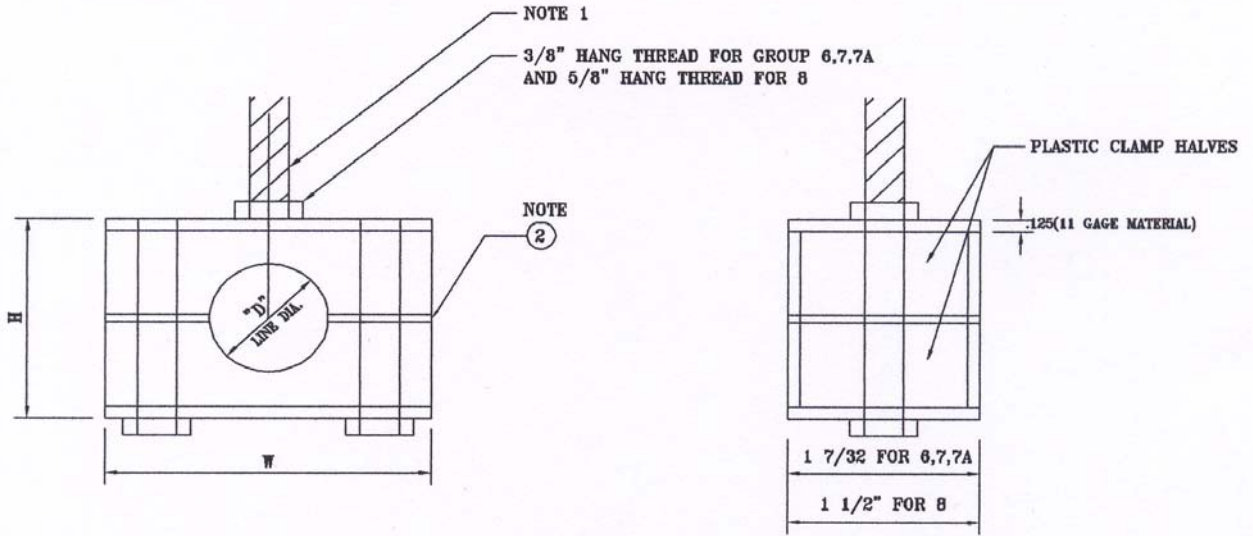


ProCOMP PARTS CATALOG – YOUR SOURCE
Telephone (888)388-4321 Fax (732)786-9511
www.ProCOMP-INC.com

THREADED HANG PLATE MOUNT

FABRICATION/INSTALLATION NOTES:

1. THREADED ROD MOUNT FOR HANGING SUPPORT
2. USE THERMAL EXPANSION GUIDE (IF NECESSARY) SEE DWG. No. SB-CLH-COP-STW FOR ORDERING INFO.



GROUP No.	"D" LINE DIA.	BEHRINGER PART No.	H	W
6	1/4"	SB-* -6025 -** -COP-HAP	2.63	3.94
	3/8"	SB-* -60375 -** -COP-HAP		
	1/2"	SB-* -6050 -** -COP-HAP		
	3/4"	SB-* -6075 -** -COP-HAP		
	1"	SB-* -6100 -** -COP-HAP		
	1 1/4"	SB-* -6125 -** -COP-HAP		
	1 1/2"	SB-* -6150 -** -COP-HAP		
7	2"	SB-* -6200 -** -COP-HAP	4.38	5.00
	2 1/2"	SB-* -7250 -** -COP-HAP		
	3"	SB-* -7300 -** -COP-HAP		
7A	3 1/2"	SB-* -7350 -** -COP-HAP	4.80	5.77
8	4"	SB-* -7A400 -** -COP-HAP	7.65	8.88
	6"	SB-* -8600 -NN -COP-HAP		

** - "PP" = POLYPROPYLENE
"SP" = SANTOPRENE
"NN" = UHMW
* - SPECIFY HARDWARE
"1" = 304 STAINLESS STEEL
"X" = 316 STAINLESS STEEL
"Z" = ZINC PLATED

NOTE: THESE PART NUMBERS DO NOT INCLUDE 3/8" DIAMETER THREADED ROD.

600 Park Ave., Manalapan, NJ 07726